

PULL OUT TEST APPARATUS

The device is used for determining the bond strength between anchored reinforcing steel bar (rebar) and concrete and for checking anchorage performance in-situ.

Two models are available Manuel and Digital.

Manuel Rebar Pull-Out Force Tester has 30 ton capacity Hydraulic Jack (Piston), 700 bar Hydraulic Hand Pump, High Pressure Hose and Connection apparatus.

Digital Rebar Pull-Out Force Tester has Battery Operated Digital Readout Unit, Pressure Transducer, 30 ton capacity Hydraulic Jack (Piston), 700 bar Hydraulic Hand Pump, High Pressure Hose and Connection apparatus.

Rebar Pull-Out Force Testers have a steel hydraulic cylinder.

The apparatus is supplied complete with Special Jaw Set (8-10/12-14/16-18/20-22/24-26/28-30/30-32) which allows user to test anchorage rebar with different diameters. These jaws are made of high strength steel.

It is suitable up to Q 32 mm sample.

Technical Specifications:

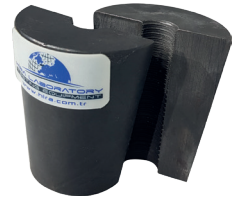
Product Code	Product Name	Rebar dia. (mm)	Stroke (mm)	Dimensions (cm)	Weight (kg)
HR-C0290	Manuel Pull Out Test Apparatus	Ø 8 to 32	50	18x18x21	28
HR-C0295	Digital Pull Out Test Apparatus	Ø 8 to 32	50	18x18x21	28



HR-C0290



HR-C0291/2
HR-C0291/3
HR-C0291/4



HR-C0291/7

Spare Parts & Accessories:

Product Code	Product Name
HR-C0290/1	Hydraulic Hand Pump
HR-C0290/2	Hydraulic Jack (Piston)
HR-C0290/3	High Pressure Hose, 1 m
HR-C0295/1	Battery Operated Digital Readout Unit
HR-C0295/2	Pressure Transducer
HR-C0291	Special Jaw Set, Ø 8 to 32 mm
HR-C0291/1	Jaw Set for Ø 8-10 mm
HR-C0291/2	Jaw Set for Ø 12-14 mm
HR-C0291/3	Jaw Set for Ø 16-18 mm
HR-C0291/4	Jaw Set for Ø 20-22 mm
HR-C0291/5	Jaw Set for Ø 24-26 mm
HR-C0291/6	Jaw Set for Ø 28-30 mm
HR-C0291/7	Jaw Set for Ø 30-32 mm
HR-C0291/9	Jaw Seat



HR-C0295

